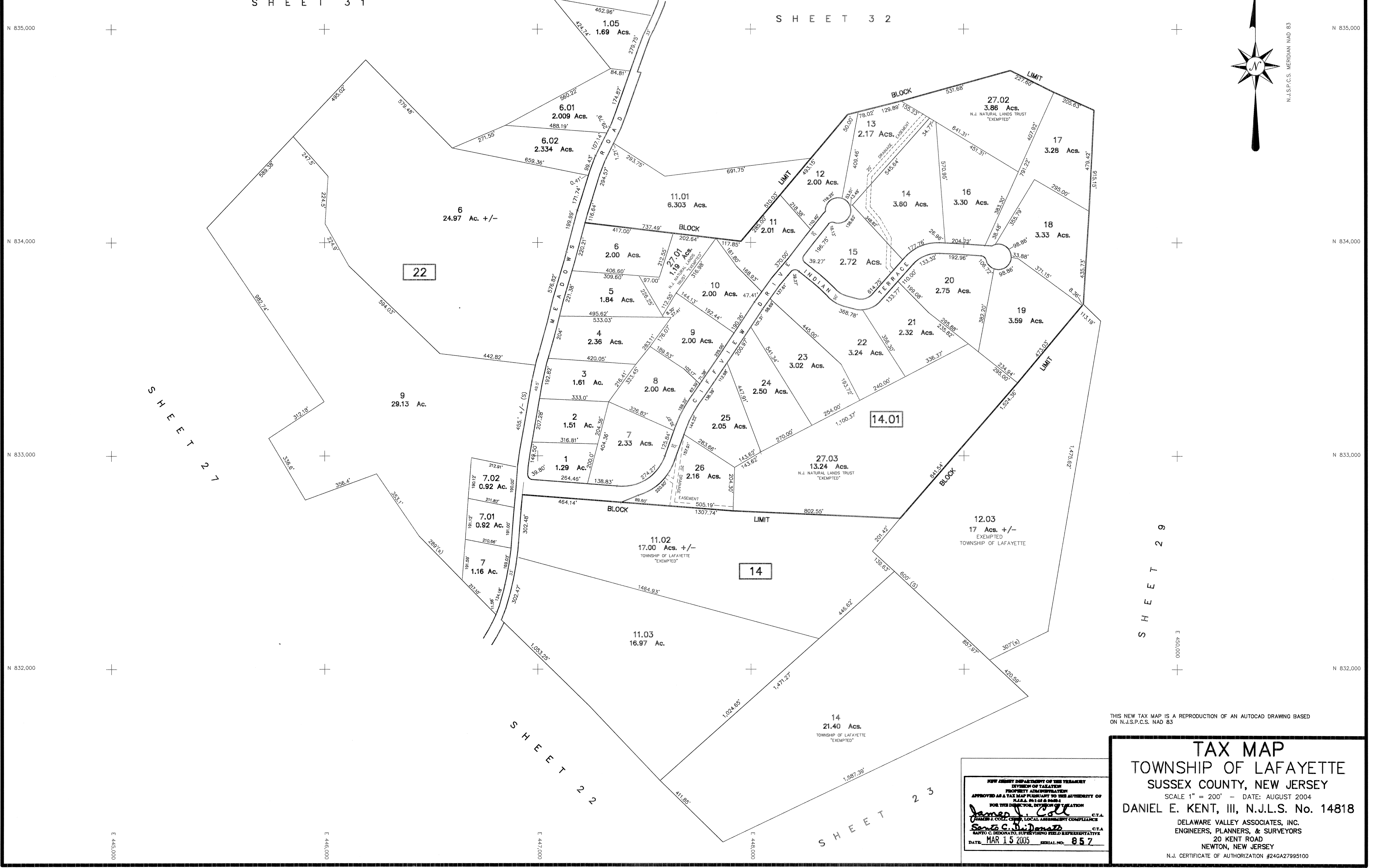


REVISIONS		
DATE	NAME	LIC. No.
01-13-05	DANIEL E. KENT, III	14818



THIS NEW TAX MAP IS A REPRODUCTION OF AN AUTOCAD DRAWING BASED ON N.J.S.P.C.S. NAD 83

NEW JERSEY DEPARTMENT OF THE TREASURY
 DIVISION OF TAXATION
 PROPERTY ADMINISTRATION
 APPROVED AS A TAX MAP PURSUANT TO THE AUTHORITY OF
 N.J.S.A. 17:27 & 17:28
 FOR THE DIRECTOR, DIVISION OF TAXATION
James J. Call C.T.A.
Scott C. DiDomenico C.T.A.
 MAR 15 2005 SERIAL NO. 057

TAX MAP
TOWNSHIP OF LAFAYETTE
SUSSEX COUNTY, NEW JERSEY
 SCALE 1" = 200' - DATE: AUGUST 2004
DANIEL E. KENT, III, N.J.L.S. No. 14818
 DELAWARE VALLEY ASSOCIATES, INC.
 ENGINEERS, PLANNERS, & SURVEYORS
 20 KENT ROAD
 NEWTON, NEW JERSEY
 N.J. CERTIFICATE OF AUTHORIZATION #24G27995100