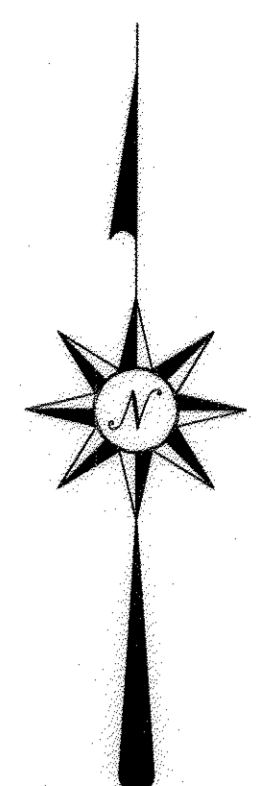
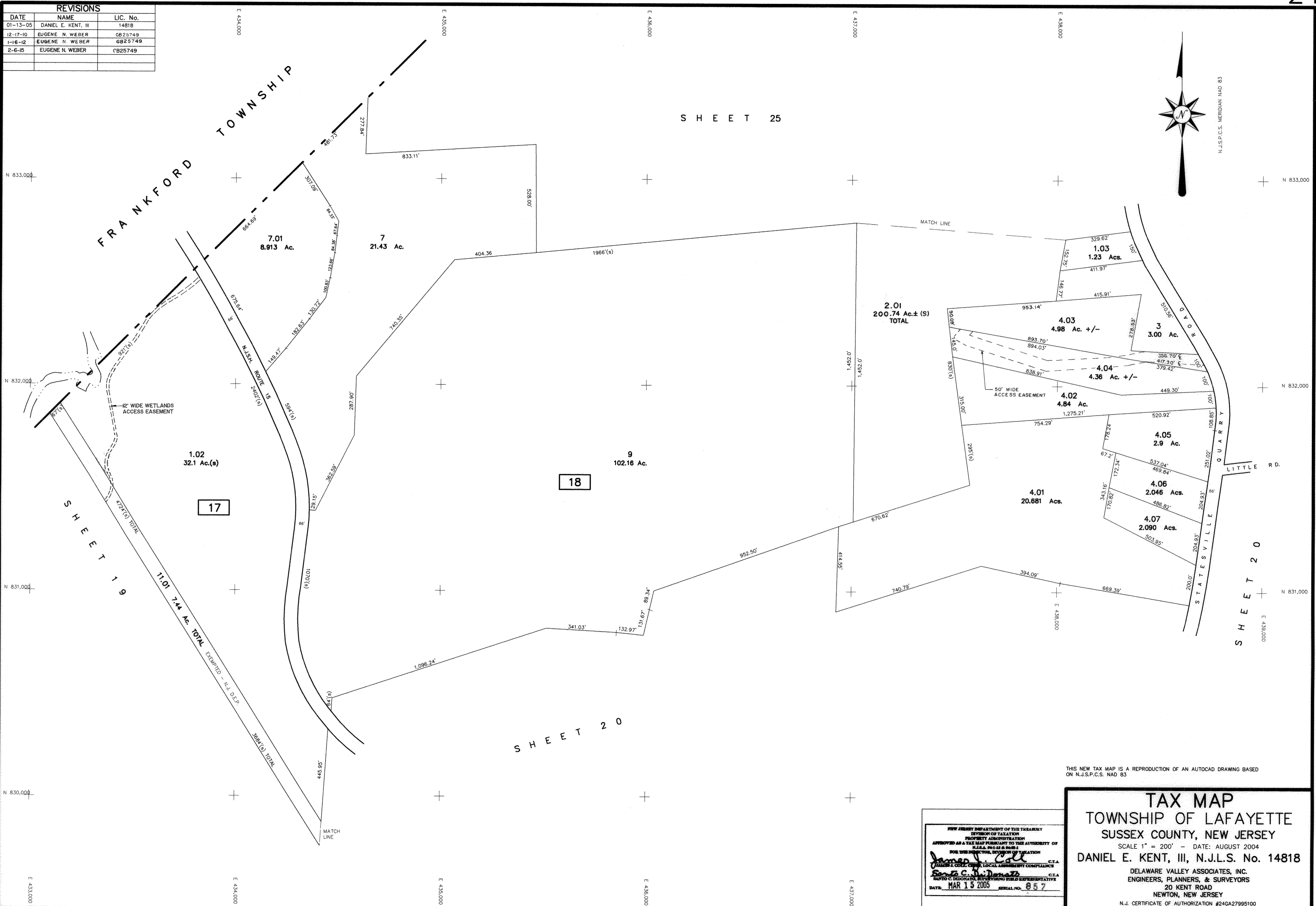


REVISIONS		
DATE	NAME	LIC. No.
01-13-05	DANIEL E. KENT, III	14818
12-17-10	EUGENE N. WEBER	6B25749
1-16-12	EUGENE N. WEBER	6B25749
2-6-15	EUGENE N. WEBER	CB25749



N.J.S.P.C.S. MERIDIAN NAD 83

THIS NEW TAX MAP IS A REPRODUCTION OF AN AUTOCAD DRAWING BASED ON N.J.S.P.C.S. NAD 83

NEW JERSEY DEPARTMENT OF THE TREASURY
 DIVISION OF TAXATION
 PROPERTY ADMINISTRATION
 APPROVED AS A TAX MAP PURSUANT TO THE AUTHORITY OF
 N.J.S.A. 54:12A-20.4
 FOR THE DIRECTOR, DIVISION OF TAXATION
[Signature]
 C.T.A.
 PUBLIC & COLLECTOR, LOCAL GOVERNMENT COMPLIANCE
[Signature]
 C.T.A.
 SAITO C. DI DONATO, SUPERVISING FIELD REPRESENTATIVE
 DATE: MAR 15 2005 SERIAL NO. 857

TAX MAP
TOWNSHIP OF LAFAYETTE
SUSSEX COUNTY, NEW JERSEY
 SCALE 1" = 200' - DATE: AUGUST 2004
DANIEL E. KENT, III, N.J.L.S. No. 14818
 DELAWARE VALLEY ASSOCIATES, INC.
 ENGINEERS, PLANNERS, & SURVEYORS
 20 KENT ROAD
 NEWTON, NEW JERSEY
 N.J. CERTIFICATE OF AUTHORIZATION #24GA27995100